

SatCom-Line SC60 | SC90

**Maritime VSAT Broadband
up to 2048 kbps/256 kbps INTERNET/DATA/VOICE**

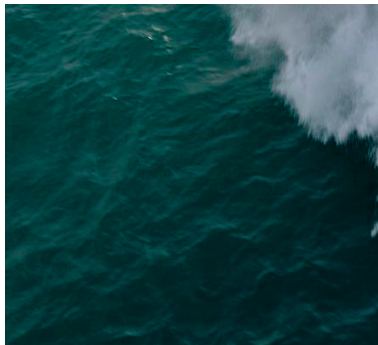
SC60 Ku

One of the world's smallest 2-Way Ku-Band-VSAT satellite communication antenna. The most price effective system for maritime broadband internet.

Coverage:
Europe & worldwide areas



SC90 Ku offshore



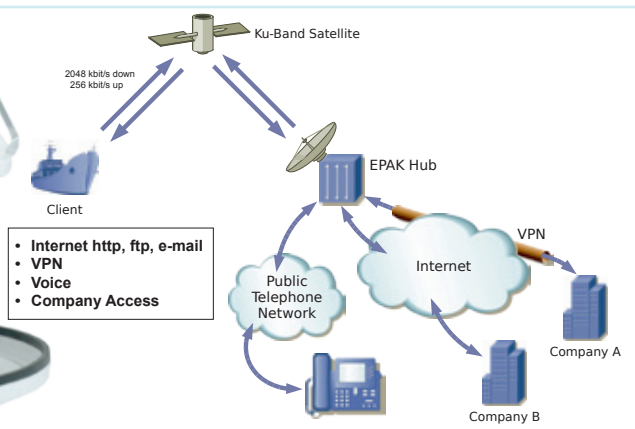
Solutions for Inland & Offshore

- Private ships + yachts
- Commercial ships + fishery
- Governmental ships
- Military ships

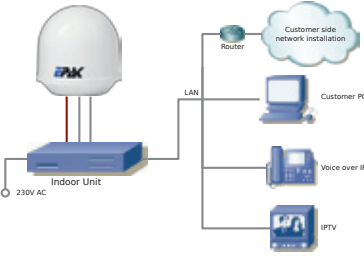


Very High Throughput at
Very Reasonable
Prices – e.g. Professional
Airtime with 2048 kbps down
and 256 kbps up
(see pricelist)



SC90 Ku



SatCom-Line SC60 | SC90

<ul style="list-style-type: none"> • High availability through EPAK High Speed Tracking Systems • Airtime + antenna from one hand – no trouble after sales • Support network in all coverage zones 		<ul style="list-style-type: none"> • Easy to install and user-friendly • Tracking information derived from Satellite signal – no more pointing problems caused by sensor inaccuracy
<p>SC60 Ku</p> 	<ul style="list-style-type: none"> • High positioning speed, high tracking speed and high accuracy with every movement of the ship by using EBF (Electronic Beam Forming) • Unlimited High-Speed Tracking (no cable unwrap) 	

Antenna	SC60	SC90
Reflector	60 cm	90 cm
Minimum EIRP of Satellite	47 dBW	44 dBW
LNB	PLL stabilized linear	
BUC	PLL stabilized	
Radome Diameter / Height (mm)	728 / 810	1114 / 1140
Weight	42 kg	60 kg
Azimuth	unlimited	
Elevation	0° – 90°	-10° – 90°
Skew Range	mechanical range is 300° (210°+90° from zero position)	
Drive System	belt driven 3 axes servo system	
Tracking Sensor	Electronic Beamforming (EBF-Gyro)	
Tracking Speed	> 40 °/s	
Lock On Time	10 – 20 sec.	
Power Supply	220 V	
Satellite Acquisition	completely automated	

System	
Operation Temperature	-20 to +60 °C
Storage Temperature	-30 to +85 °C

River-Line | Basic-Line | Premium-Line

TV-Antennas

River-Line

- Well suited for inland water ships on rivers and lakes
- 12°/s tracking speed
- Fast relock after passing bridges
- Perfect for using in harbours
- 45 and 60 cm available
- Very cost effective system
- Single, Twin and Quattro models available



Basic-Line

- Excellent TV reception during cruising on a vessel in open sea
- High tracking speed of 40°/s for non-interrupted reception
- designed for all kind of ships even for smaller boats
- 45 and 60 cm available
- Single, Twin and Quattro models available

Premium-Line

- Very high tracking speed up to 70°/s
- TV reception is possible even in the roughest sea conditions
- Use of selected materials and exclusive design
- 45, 60 and 90 cm available
- TV61 and TV90 with automatic skew adjustment and tracking



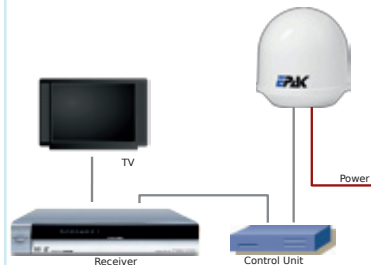
TV59

River-Line | Basic-Line | Premium-Line

Because of the different footprints of several satellites in your area a choice of the reflector size between 45 cm, 60 cm and 90 cm is necessary. Please find out further information at your dealer or at our website www.epak.de!



- Support network in all coverage zones
- Tracking information derived from Satellite signal – no more pointing problems caused by sensor inaccuracy



Please note that the reception of programs in different regions depends on the footprint (coverage area) of the satellites. Take into consideration that rain, snow, dense clouds and violent motion in areas of weak signal strength can affect TV reception. Satellite footprints are subject to change without notice.



	River-Line		Basic-Line		Premium-Line		
Antenna	TV43	TV58	TV44	TV59	TV46	TV61	TV90
Reflector	45 cm	60 cm	45 cm	60 cm	45 cm	60 cm	90 cm
Minimum EIRP	49 dBW	48 dBW	49 dBW	48 dBW	49 dBW	47 dBW	44 dBW
LNB	Universal linear/circular						
Radome Diameter	540 mm	700 mm	540 mm	700 mm	540 mm	735 mm	1114 mm
Radome Height	550 mm	690 mm	550 mm	690 mm	550 mm	810 mm	1140 mm
Weight	12 kg	16 kg	12 kg	16 kg	20 kg	35 kg	56 kg
Azimuth	unlimited						
Elevation	5° – 85°	5° – 90°	5° – 85°	5° – 90°	5° – 85°	0° – 90°	-10° – 90°
Drive	2 axes servo, tooth belt gears				2 axes direct drive with gears	3 axes servo system	
Tracking Sensor	Electronic Beamforming (EBF-Gyro)						
Tracking Speed	> 12 °/s		> 40 °/s		> 70 °/s	> 40 °/s	
Lock On Time	10 – 20 sec.				typ. 30 sec.		
Power Supply	12 – 36 V DC						
Twin availability	x	x	x	x	x		
Quattro availability		x		x		x	x

Control Unit	
Power Supply	12 – 20 VDC, 100 mA, powered by receiver
Satellite Acquisition	completely automated by SatFingerprint Technology
Satellite Positions	up to 4 freely programmable positions
Satellite Selection	by control unit or by receiver (via DiSEqC™)

System	
Operation Temperature	-20 to +70 °C
Storage Temperature	-30 to +85 °C